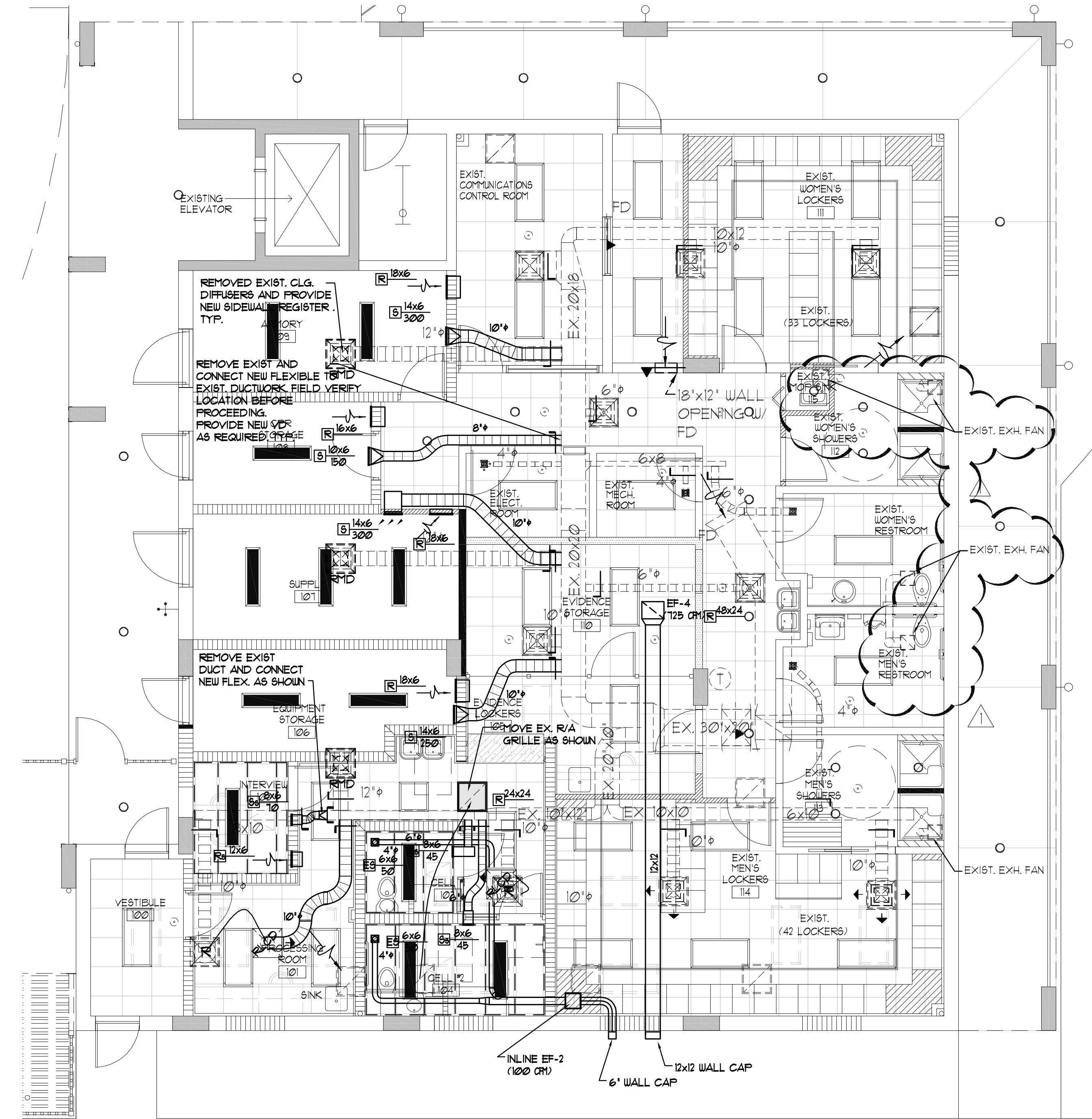
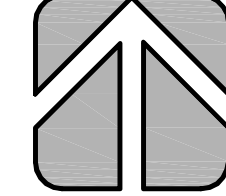


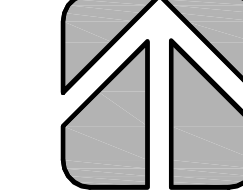
Lobby Area - HVAC Plan
Ground Floor

3/16" NORTH

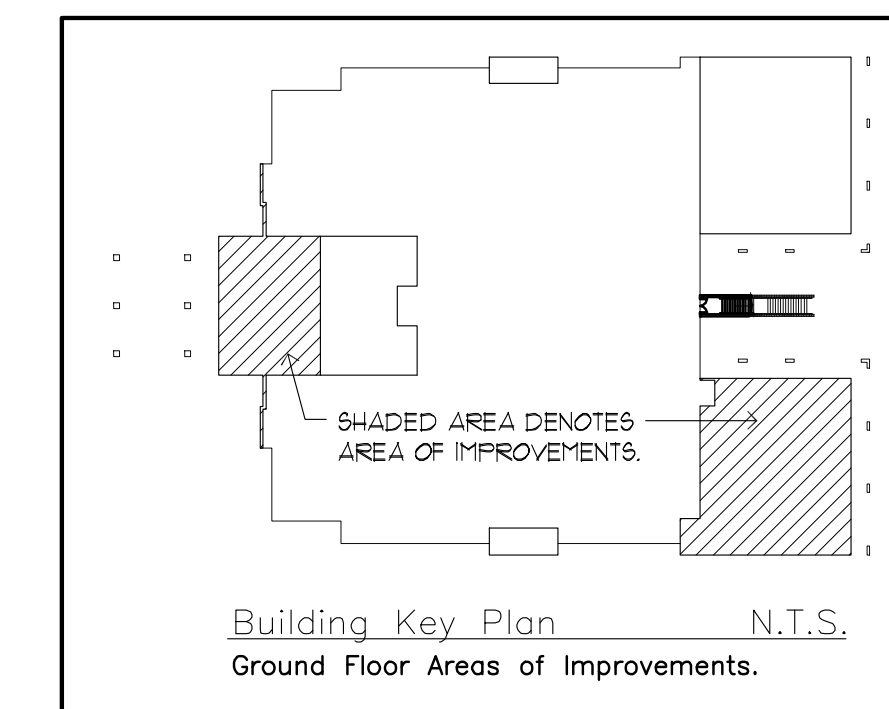


Police Sub-Station - HVAC Plan
Ground Floor

3/16" NORTH



HVAC LEGEND & SYMBOLS			
	EXIST. CLG DIFFUSER TO REMAIN		EXIST. R/A OR EXH REGISTER TO REMAIN
	NEW MODULAR S/A CLG DIFFUSER AND NECK SIZE		EXISTING THERMOSTAT
	NEW MODULAR R/A CLG DIFFUSER		NEW FIRE DAMPER
	NEW SIDEWALL DIFFUSER, NECK SIZE AND CRH		EXIST. S/A DIFFUSER TO BE REMOVED
	EXIST. INSULATED GLASS FIBER DUCT TO REMAIN		EXIST. R/A REGISTER TO BE REMOVED
	NEW INSULATED GLASS FIBER DUCT		EXIST. S/A CLG DIFFUSER TO BE RELOCATED
	EXIST. INSULATED FLEXIBLE DUCT		EXIST. R/A REGISTER TO BE RELOCATED
	NEW INSULATED FLEXIBLE DUCT		RELOCATED R/A REGISTER
			RELOCATED S/A CLG DIFFUSER
	EXIST. VAV BOX		
	NEW VAV BOX		



THIS IS A PRELIMINARY DRAWING. IT IS NOT TO BE USED FOR CONSTRUCTION. ANY CHANGES TO THIS DRAWING MUST BE APPROVED BY THE ARCHITECT. THE ARCHITECT'S OFFICE SHALL BE RESPONSIBLE FOR OBTAINING ALL NECESSARY PERMITS AND APPROVALS. THE ARCHITECT'S OFFICE SHALL BE RESPONSIBLE FOR OBTAINING ALL NECESSARY PERMITS AND APPROVALS. THE ARCHITECT'S OFFICE SHALL BE RESPONSIBLE FOR OBTAINING ALL NECESSARY PERMITS AND APPROVALS.

ANTONIO FRANKE
PE #11660, MECH
10999 FRANKIE
PE #49885, VE

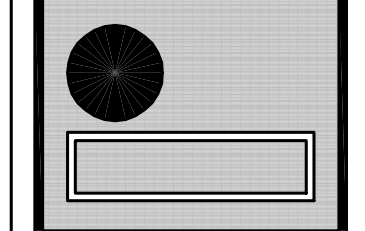
Certificate of
Authorization #
60003006

DATE: 04/04/14

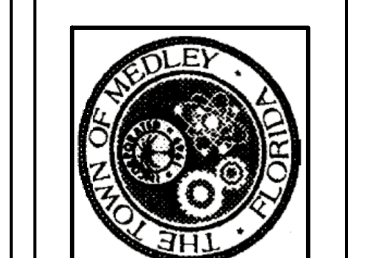
JOB NUMBER: 13-222

Architecture
Planning &
Urban Design
Space Planning
Interior Design
Corp. Lic. # A-000994

Rodriguez Pereira
Architects, Inc.
8000 NW 7th Street - Suite 103 - Miami, FL 33126
Phone: (305) 592-8045 FAX: (305) 592-5156
WWW.RODRIGUEZPEREIRA.COM



INTERIOR ALTERATIONS FOR:
The Town of Medley - Florida
Municipal Services Facility
Owner: The Town of Medley
7777 NW 72nd Avenue
Medley, FL 33166 Phone: (305) 887-9541



REVISIONS	BY
05-05-14	RR
RD, COORD. COMM.	RR

May 20 2014

NOT VALID FOR CONSTRUCTION
UNLESS SIGNED & SEALED BY THE P.E. &
ALL REVISIONS APPROVED BY ARCHITECTS
AND CORRECTED AND RE-DATE
AS APPROPRIATE WITH THESE SHEETS.

Date
Scale
Drawn
Job
Sheet
M-1
Of 4 Sheets

HVAC NOTES

- 1.0 GENERAL**
- 1.1 PROVIDE (FURNISH AND INSTALL) ALL NECESSARY MATERIALS AND LABOR FOR A COMPLETELY OPERATIONAL HEATING, VENTILATING AND AIR CONDITIONING (HVAC) SYSTEM AS DEPICTED ON THESE CONTRACT DOCUMENTS.
 - 1.2 INSTALL IN ACCORDANCE WITH THE SOUTH FLORIDA CODE, ASHRAE SMACNA, NFPA AND LOCAL ORDINANCES.
 - 1.3 SCOPE OF WORK :
PROVIDE THE FOLLOWING COMPLETE SYSTEMS :
A. AIR CONDITIONING SUPPLY AND RETURN DUCT SYSTEM.
B. EXHAUST SYSTEM FOR TOILET ROOMS.
C. EXHAUST SYSTEMS FOR WAREHOUSE.
D. AIR CONDITIONING UNITS AND CONTROLS.
E. INDEPENDENT TEST AND BALANCE.
 - 1.4 NOT USED.
 - 1.5 PAY FOR ALL FEES, INSPECTIONS AND CONNECTION CHARGES REQUIRED.
 - 1.6 VERIFY AT JOB SITE ALL SPACE CONDITIONS AVAILABLE FOR THE INSTALLATION OF MATERIALS AND EQUIPMENT PRIOR TO THE INSTALLATION OF EQUIPMENT AND FABRICATION OF DUCTS AND PIPING SYSTEMS. COORDINATE SPACE REQUIREMENTS FOR SERVICE AND MAINTENANCE AND COORDINATE INTERFERENCE WITH OTHER TRADES.
 - 1.7 NATURE OF DESIGN DRAWINGS, DESIGN DRAWINGS ARE DIAGRAMMATIC AND DO NOT INTEND TO SHOW EVERY FITTING, ELBOW, TRANSITION, ETC. THAT WILL BE NECESSARY FOR A COMPLETE AND OPERATIONAL SYSTEMS REQUIRED BY THESE SPECIFICATIONS.
 - 1.8 COORDINATION DRAWINGS: PREPARE 1/4" SCALE (MIN.) COORDINATION DRAWINGS SHOWING DUCTWORK, PIPING AND ALL MAJOR SYSTEM COMPONENTS FOR A/E APPROVAL BEFORE PROCEEDING WITH INSTALLATION. IMPLEMENT ALL INFORMATION FROM 1.6 ABOVE.
 - 1.9 SUBMIT SHOP DRAWINGS FOR A/E APPROVAL BEFORE PROCEEDING WITH THE PURCHASE OR INSTALLATION OF EQUIPMENT AND MATERIALS. ALL SHOP DRAWINGS MUST BE SUBMITTED IN A SINGLE BOUND AND INDEXED PACKAGE NO LATER THAN 30 DAYS FROM THE ADJUDICATION OF THE PROJECT.
 - 1.10 GUARANTEE ALL WORK FREE OF DEFECTS IN MATERIALS AND WORKMANSHIP FOR A PERIOD OF ONE YEAR FROM THE DATE OF PROJECT ACCEPTANCE.
- 2.0 MATERIALS**
- 2.1 DUCTWORK**
- 2.1.1 GENERAL, ALL DUCT SIZES SHOWN ARE CLEAR INSIDE DIMENSIONS.
 - 2.1.2 DUCTWORK MATERIALS:
A. GENERAL OFFICE AREAS:
FIVE POUNDS DENSITY 1.5" THICK GLASS FIBER (R-6) DESIGNED, CONSTRUCTED AND INSTALLED IN ACCORDANCE WITH SMACNA'S FIBROUS GLASS DUCT CONSTRUCTION STANDARDS. DUCT JOINTS SHALL BE SEALED AND TAPED.
B. TOILET ROOM EXHAUST AND FRESH AIR INTAKES:
GALVANIZED SHEET METAL, CONSTRUCTED, AND INSTALLED ACCORDING TO LATEST EDITION OF SMACNA'S. LOW PRESSURE CONSTRUCTION STD. (0.5" W.G.)
 - 2.1.3 PROVIDE DOUBLE THICKNESS TURNING VANES AT ALL SQUARE ELBOWS, WHERE THE ELBOWS ARE RECTANGULAR INSTALL SINGLE THICKNESS VANES.
1. ALTERNATE A: PROVIDE 3-PIECE ELBOWS IN LIEU OF TURNING VANES FOR GLASS FIBER DUCTS ONLY.
2. ALTERNATE A: PROVIDE FULL RADIOS ELBOWS IN LIEU OF TURNING VANES.
 - 2.1.4 PROVIDE VOLUME EXTRACTORS BEHIND EACH SUPPLY OUTLET AND AT EACH DUCT BRANCH.
- D: CORRIDORS SUPPLY AIR RISER & ALL VERTICAL RISERS**
1. DUCT IN SHAFT:
CONSTRUCT OF GALVANIZED SHEET METAL IN ACCORDANCE WITH SMACNA PRESSURE RATING OF 3" W.G. INSULATE WITH 1 1/2" GLASSFIBER THERMAL BLANKET WITH APPROVED FRJ REINFORCE ALUMINUM JACKED. SEAL AIR TIGHT ALL JOINT WITH APPROVED HIGH VELOCITY MASTIC.
 - 2 NOT USED
 3. MAIN SUPPLY AIR DUCTS IN VAV SYSTEMS
 - 3.1 UPSTREAM OF VAV BOXES:
CONSTRUCT OF GALVANIZED SHEET METAL IN ACCORDANCE WITH SMACNA PRESSURE RATING OF 3" W.G. INSULATE WITH 1 1/2" GLASSFIBER THERMAL BLANKET WITH APPROVED FRJ REINFORCE ALUMINUM JACKED. SEAL AIR TIGHT ALL JOINT WITH APPROVED HIGH VELOCITY MASTIC.
 - 3.2 DOWNSTREAM OF VAV BOXES:
FIVE POUND DENSITY 1.5" THICK GLASS FIBER (R-6) DESIGNED, CONSTRUCTED AND INSTALLED IN ACCORDANCE WITH SMACNA'S LOW PRESSURE DUCT MANUAL. ALL DUCT JOINTS SHALL BE SEALED AND TAPED.
- 2.2 NOT USED.
- 2.3 NOT USED.
- 2.4 AIR DISTRIBUTION PRODUCTS :
- 2.4.1 PROVIDE EXTRUDED ALL ALUMINUM AIR DISTRIBUTION PRODUCTS.
 - 2.4.2 PROVIDE SUPPLY AND RETURN GRILLES AND DIFFUSERS AS INDICATED ON THE DRAWINGS AND SCHEDULES.
 - 2.4.3 PROVIDE FINISHES AND TYPES OF MOUNT IN COORDINATION WITH THE CEILING TYPES AS SHOWN ON ARCHITECTURAL DRAWINGS.
 - 2.4.4 PROVIDE OPPOSED BLADE, KEY OPERATED DAMPERS BEHIND ALL AIR SUPPLY OUTLETS.
- 2.5 PROVIDE A MINIMUM 5 YEAR WARRANTY FOR ALL AIR CONDITIONING COMPRESSORS STARTING FROM THE DATE OF PROJECT ACCEPTANCE.
- 2.6 CONTROLS:
- 2.6.1 GENERAL: PROVIDE THE NECESSARY AUTOMATIC CONTROLS FOR PROPER OPERATION OF ALL EQUIPMENT SPECIFIED HEREIN. FURNISH MAGNETIC STARTERS AND INTERLOCK WIRING INDICATED FOR EACH PIECE OF EQUIPMENT.
 - 2.6.2 OFFICE AREA DX EQUIPMENT:
PROVIDE AIR CONDITIONING UNITS WITH MATCHING LOW VOLTAGE HEAT/COOL THERMOSTATS WITH ON-OFF AUTO SUB-BASE SWITCH AS FURNISHED BY THE EQUIPMENT MANUFACTURER.
- 2.7 STARTERS:
PROVIDE MAGNETIC STARTER FOR ALL MECHANICAL EQUIPMENT IN THIS SECTION AS DESCRIBED ON THE EQUIPMENT SCHEDULES. ALL STARTERS MUST HAVE HAND-OFF-AUTO POSITION SWITCH ON THE COVER AND RED/GREEN PILOT LIGHTS. PROVIDE THE NECESSARY AUXILIARY OPEN AND CLOSED CONTACTS FOR THE INTENDED OPERATION AND INTERLOCKS.
- 2.8 NOT USED.
- 2.9 IDENTIFICATION:
- 2.9.1 LABEL ALL EQUIPMENT WITH ENGRAVED BLACK PLASTIC PLAQUES 12"x4" HIGH WITH WITH 15" LETTERS. USE THE SAME NOMENCLATURE AS IN THESE DOCUMENTS.
- 3.0 EXECUTION**
- 3.1 INSTALL ALL EQUIPMENT AND MATERIALS IN STRICT ACCORDANCE WITH THE MANUFACTURER'S MANUALS AND RECOMMENDATIONS, PAYING SPECIAL ATTENTION TO REQUIRED CLEARANCES FOR INSTALLATION, OPERATION & SERVICE. FOR INSTALLATION, OPERATION AND SERVICE.
 - 3.2 THERMOSTAT LOCATION:
THERMOSTAT LOCATION IS CRITICAL TO PROPER EQUIPMENT OPERATION. INSTALL THERMOSTAT AT LOCATIONS SHOWN ON PLANS. RELOCATE ONLY WHEN APPROVED BY THE A/E IN WRITING.
 - 3.3 WHERE R/A IS PROPOSED BY WAY OF DOOR UNDERCUTS, PROVIDE A MINIMUM 1" CLEAR SPACE BETWEEN THE BOTTOM OF THE DOOR AND THE FLOOR FINISH CARPET OR TILE.
 - 3.4 EQUIPMENT MUST OPERATE FREE OF OBJECTIONABLE NOISE AND VIBRATION REPAIR AND/OR REPLACE ALL SOURCES OF NOISE AND VIBRATION FOUND TO BE OBJECTIONABLE, TO THE SATISFACTION OF THE A/E.
 - 3.5 BALANCE ALL SYSTEMS TO PROVIDE AIR AND WATER QUANTITIES AND CAPACITIES TO MATCH SPECIFIED FLOWS & CAPACITIES.
CALIBRATE FLOWS TO NEW EQUIPMENT PER MANUFACTURER'S REQUIREMENTS. SUBMIT FINAL TEST AND BALANCE REPORT TO A/E FOR ACCEPTANCE.
 - 3.6 STRICTLY FOLLOW ALL MANUFACTURER'S INSTALLATION MANUALS AND INSTRUCTIONS IN THE INSTALLATION OF ALL EQUIPMENT.
OBTAIN FROM EACH MANUFACTURER PROPER CERTIFICATION FOR THE ADEQUACY OF THE INSTALLATION OF ALL PIECES OF EQUIPMENT BEFORE PLACING SYSTEM IN OPERATION.
 - 3.7 PROVIDE MAINTENANCE AND OPERATION MANUAL.
 - 3.8 PROVIDE AS-BUILT REPRODUCIBLE DRAWINGS.
 - 3.9 PROVIDE INSTRUCTION TO OWNER'S DESIGNATED PERSONNEL.

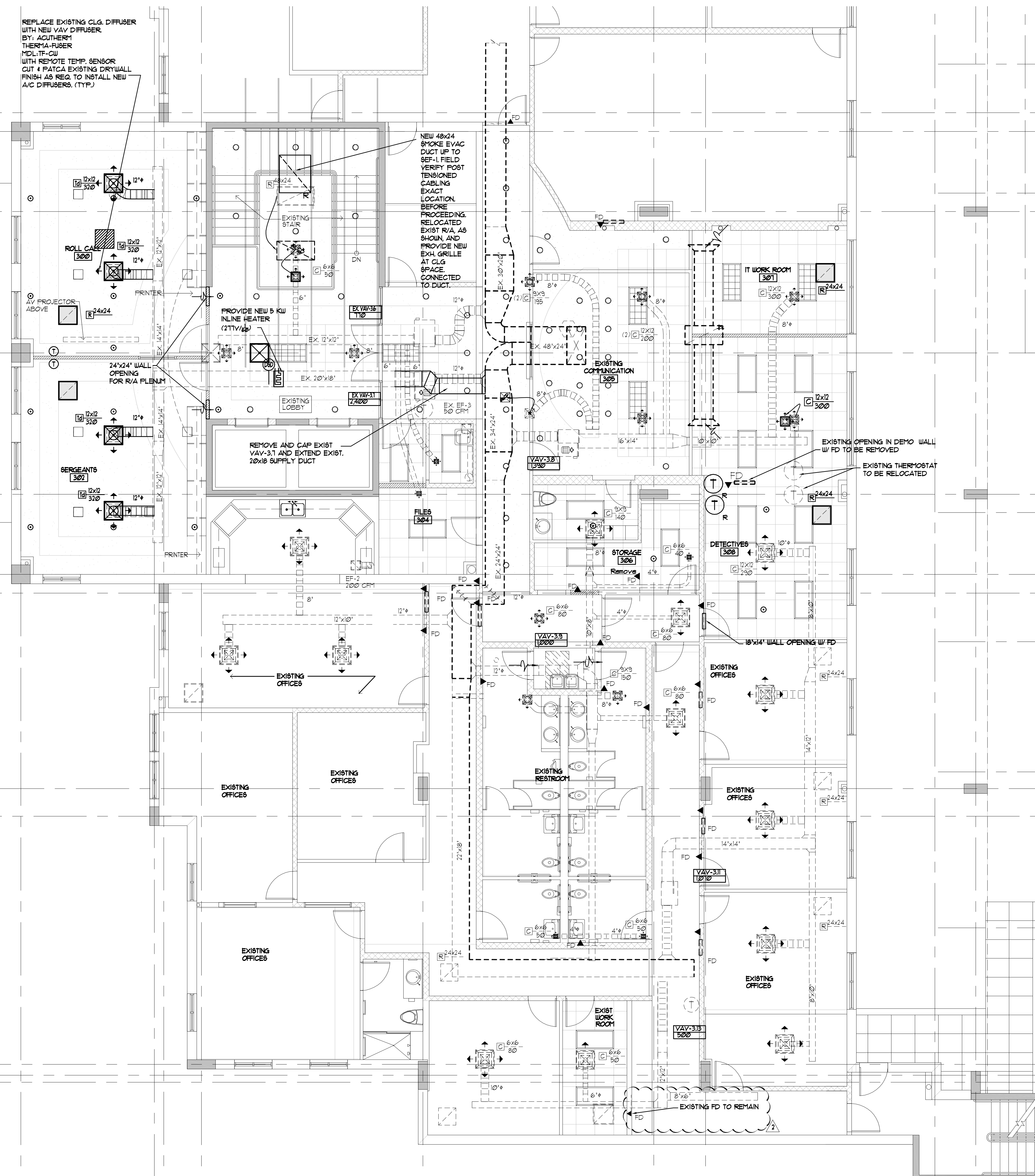
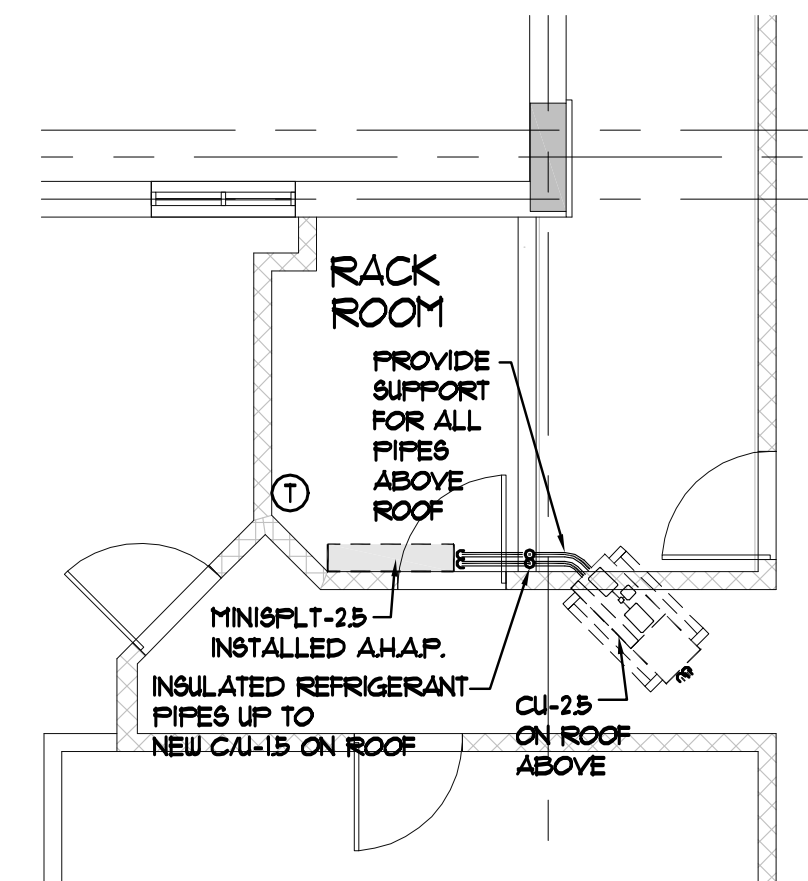
NOTES:

1. WHEN CEILING SPACES ARE "RETURN AIR CEILING PLENUMS" ALL MATERIALS INSIDE THE R/A CEILING PLENUM SHALL HAVE A MAXIMUM FLAME SPREAD INDEX OF 25 AND A MAXIMUM SMOKE DEVELOPED INDEX OF 50 PER NFPA 90A. **"NO PVC PIPING IS ALLOWED INSIDE THE R/A PLENUM."**
 2. INSULATE ROOF SLAB WITH R-19 MINIMUM INSULATION VALUE FOR ALL R/A CEILING PLENUM AREAS.
- NFPA 90A (SECTION 4-4)**
1. DUCT SMOKE DETECTOR SHALL BE INSTALLED DOWNSTREAM OF THE FILTERS AND AHEAD OF ANY BRANCH CONNECTION IN AIR SUPPLY SYSTEM HAVING A CAPACITY GREATER THAN 2000 CFM
 2. AT EACH STORY PRIOR TO THE CONNECTION TO COMMON RETURN AND PRIOR TO ANY RECIRCULATION OR FRESH AIR INLET CONNECTION IN AIR RETURN SYSTEM HAVING CAPACITY GREATER THAN 15,000 CFM AND SERVING MORE THAN ONE STORY

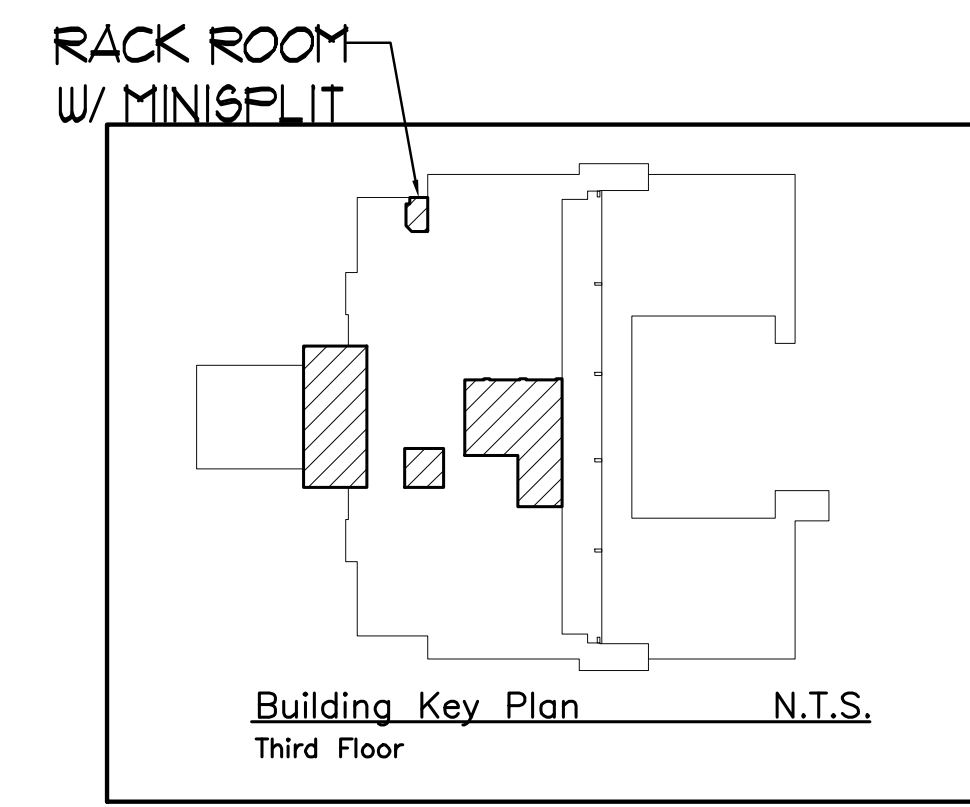
HVAC LEGEND & SYMBOLS

	EXIST. CLG DIFFUSER TO REMAIN		EXIST. VAV BOX
	EXIST. R/A OR EXH REGISTER TO REMAIN		NEW VAV BOX
	NEW MODULAR S/A CLG DIFFUSER AND NECK SIZE		EXISTING THERMOSTAT
	NEW MODULAR R/A CLG DIFFUSER		NEW FIRE DAMPER
	NEW SIDEWALL DIFFUSER NECK SIZE AND CRM		EXIST. S/A DIFFUSER TO BE REMOVED
	EXIST. INSULATED GLASS FIBER DUCT TO REMAIN		EXIST. R/A REGISTER TO BE REMOVED
	NEW INSULATED GLASS FIBER DUCT		EXIST. S/A CLG DIFFUSER TO BE RELOCATED
	EXIST. INSULATED FLEXIBLE DUCT		EXIST. R/A REGISTER TO BE RELOCATED
	NEW INSULATED FLEXIBLE DUCT		RELOCATED R/A REGISTER
			RELOCATED S/A CLG DIFFUSER

Rack Server Room - HVAC Plan 3/16" NORTH
Third Floor



Enlarged Third Floor - HVAC Plan 3/16" NORTH
Third Floor



Building Key Plan N.T.S.
Third Floor

THE TOWN OF MEDLEY, FLORIDA, HAS REVIEWED THESE PLANS AND APPROVES THEM FOR CONSTRUCTION. THIS REVIEW IS LIMITED TO THE TECHNICAL ASPECTS OF THE PLANS AND DOES NOT CONSTITUTE A GUARANTEE OF THE ACCURACY OR COMPLETENESS OF THE INFORMATION PROVIDED HEREON. THE TOWN OF MEDLEY, FLORIDA, IS NOT RESPONSIBLE FOR ANY ERRORS OR OMISSIONS IN THESE PLANS.

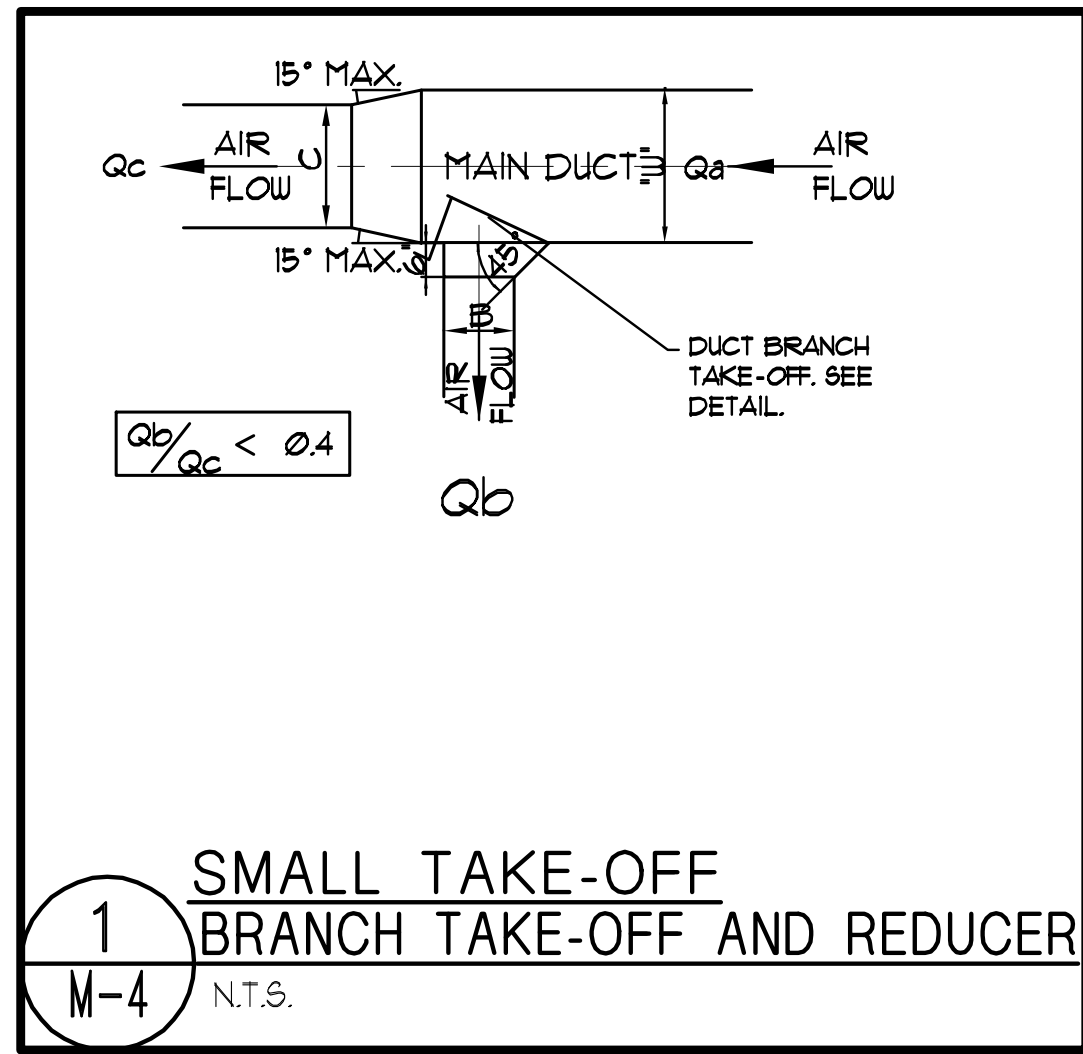
FRANKE ENGINEERS
 ANTONIO FRANKE
 PE #11660 MECH
 PE #9985 ELEC
 1001 NW 27 Street, Miami, FL 33172
 (305) 592-5156 FAX: (305) 592-5156
 www.frankeengineers.com
 DATE: 04/04/14
 JOB NUMBER: 13-222

Rodriguez Pereira Architects, Inc.
 Architecture & Urban Design
 Space Planning
 Interior Design
 8000 NW 7th Street, Suite 103 - Miami, FL 33126
 Phone: (305) 592-8045 FAX: (305) 592-5156
 WWW.RODRIGUEZPEREIRA.COM
 Corp. Lic. # A-000994

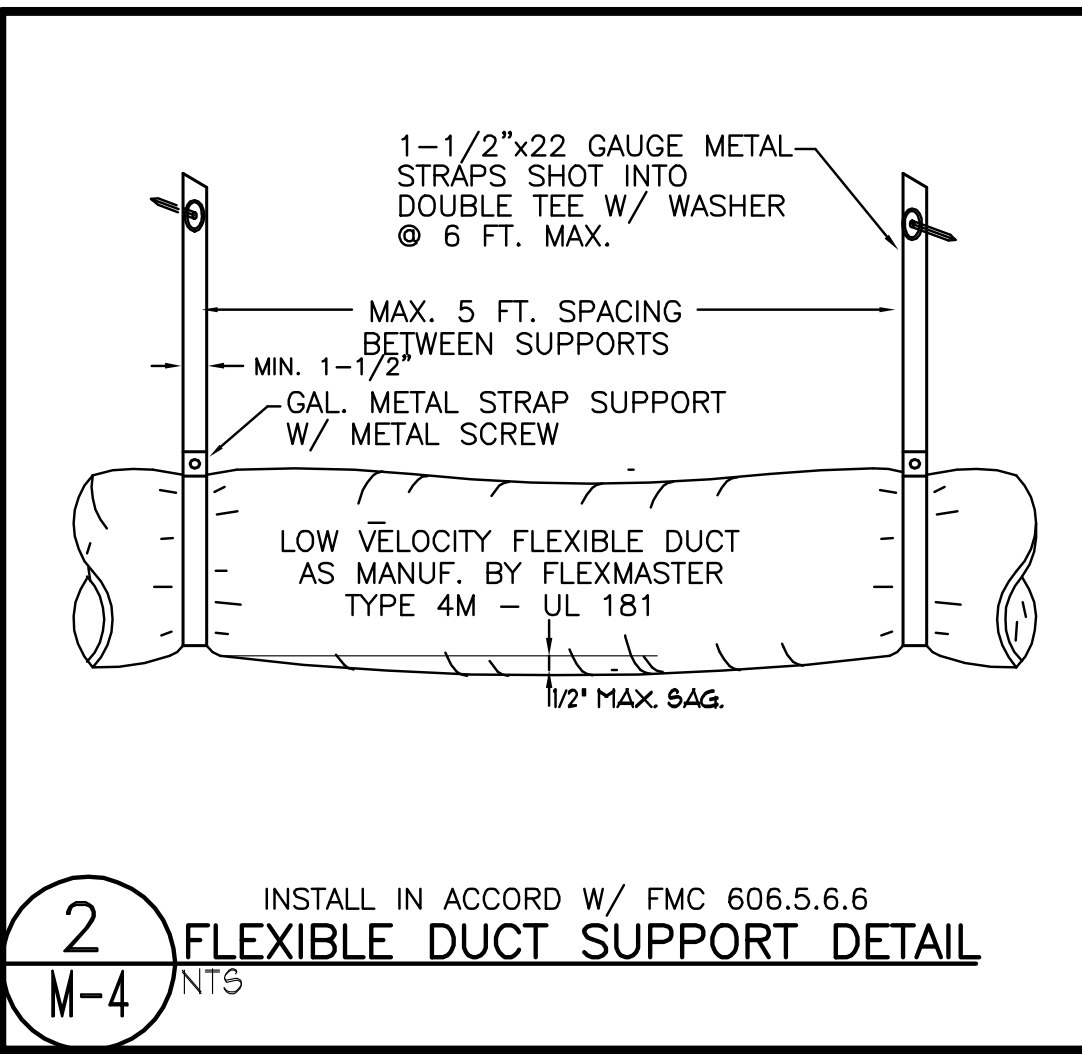
INTERIOR ALTERATIONS FOR:
The Town of Medley - Florida
 Municipal Services Facility
 Owner: The Town of Medley
 7777 NW 172nd Avenue
 Medley, FL 33166 Phone: (305) 887-9541

REVISIONS	BY
05-15-14	VF
REV SCOPE	VF

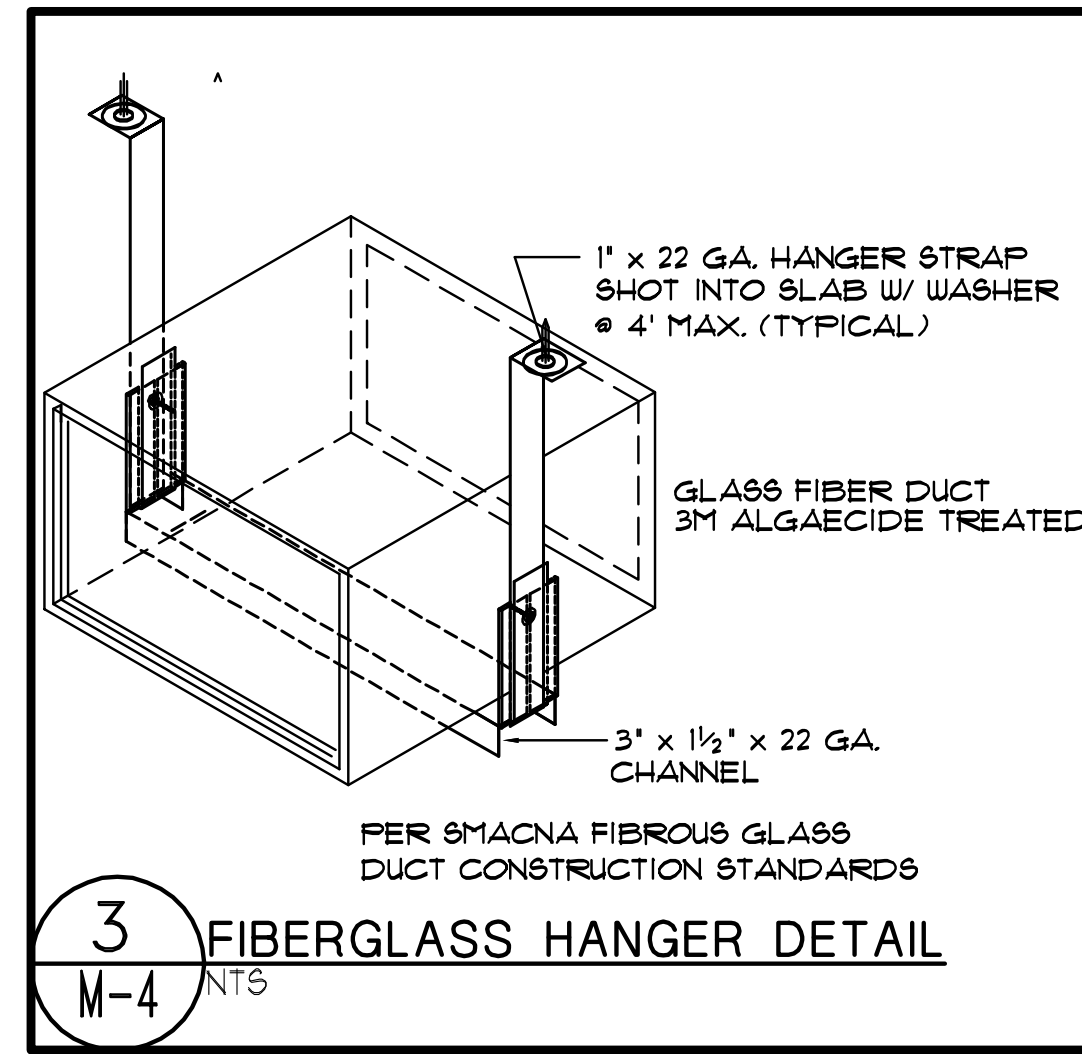
May 20 2014
 NOT VALID FOR CONSTRUCTION
 UNDER THESE PLANS & SPEC. IF THE SEAL OR ALL SIGNATURES OR ANY INFORMATION HAS BEEN ALTERED OR REPRODUCED WITHOUT THE SEAL OF THE ENGINEER.
 Date
 Scale
 Drawn
 Job
 Sheet
M-3
 Of 4 Sheets



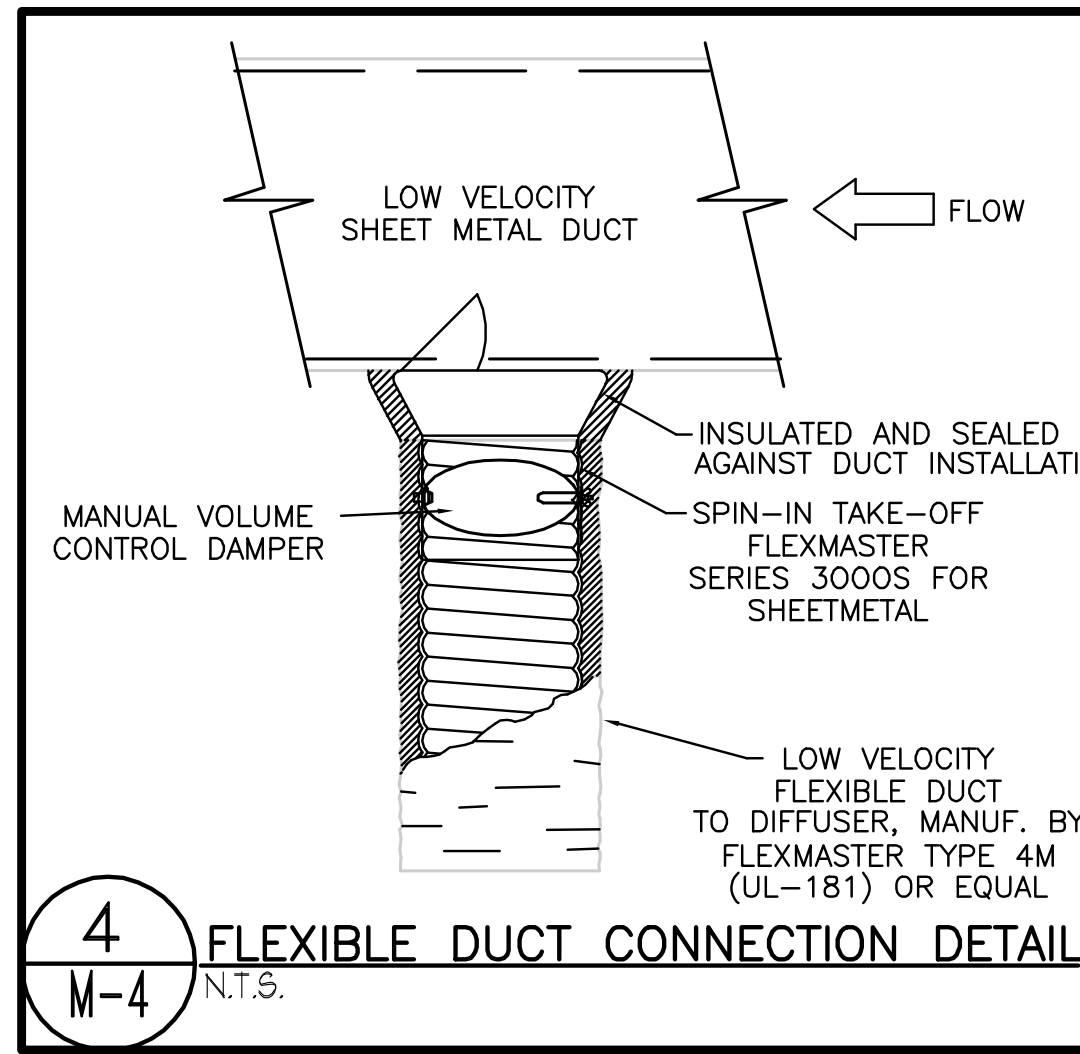
1 SMALL TAKE-OFF BRANCH TAKE-OFF AND REDUCER
M-4 N.T.S.



2 FLEXIBLE DUCT SUPPORT DETAIL
M-4 N.T.S.



3 FIBERGLASS HANGER DETAIL
M-4 N.T.S.



4 FLEXIBLE DUCT CONNECTION DETAIL
M-4 N.T.S.

HVAC DESIGN REQUIRES:

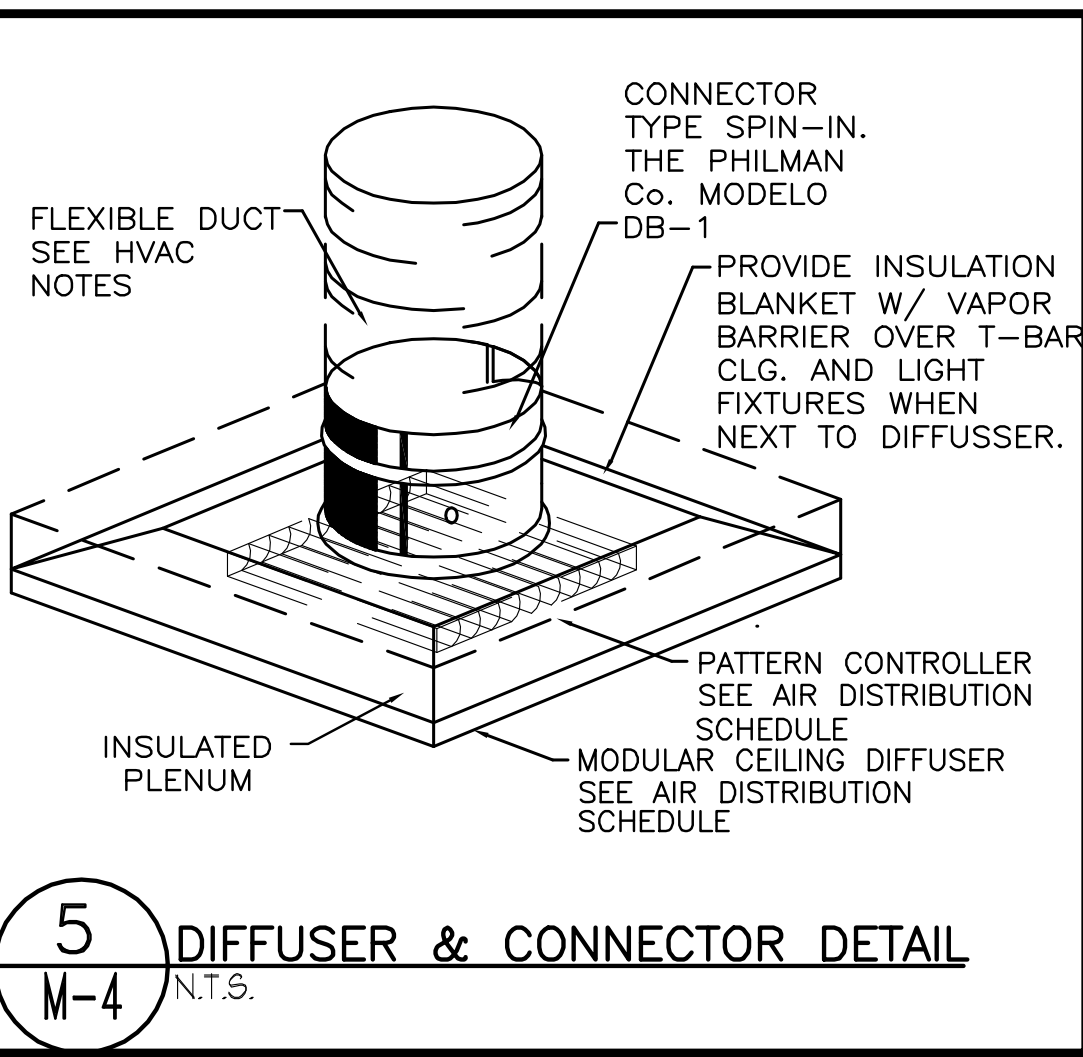
	YES	NO	Remarks
DUCT SMOKE DETECTOR	✓	-	-
FIRE DAMPER(S)	✓	-	-
SMOKE DAMPER(S)	✓	-	-
FIRE RATED ENCLOSURE	✓	-	-
FIRE RATED ROOF/FLOOR CEILING ASSEMBLY	✓	-	-
FIRE STOPPING	✓	-	-
SMOKE CONTROL	-	✓	-

NOTE: ALL AHU'S ARE EXISTING EXCEPT FOR THE NEW MINISPLIT

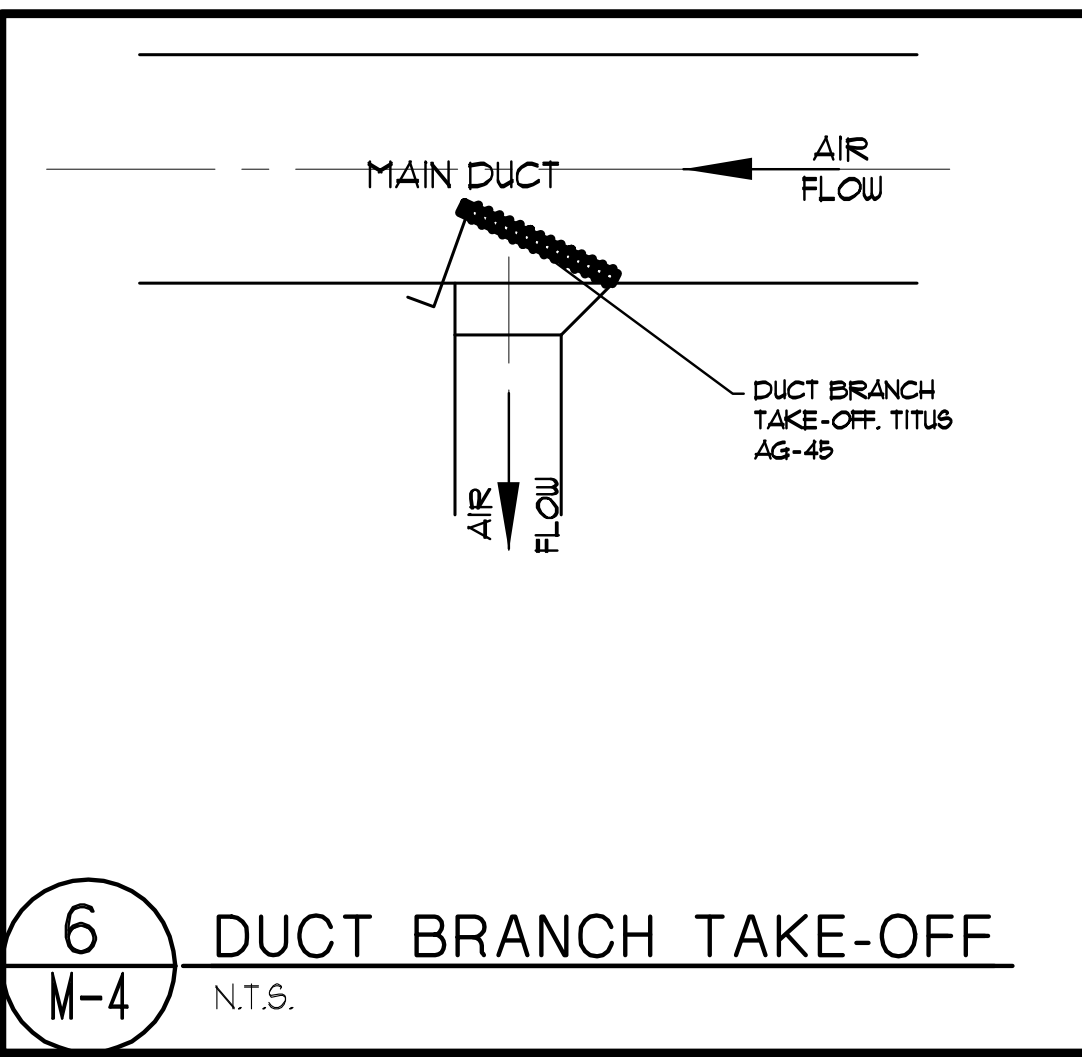
A/C SPLIT SYSTEM SCHEDULE (DUCTLESS)

DESIGNATION	MINISPLIT-25
AREA SERVED	IT RM
MANUFACTURER	DAIKIN
INDOOR UNIT MODEL NO.	FTY-GE32NA
OUTDOOR UNIT MODEL NO.	MU-GE32NA
COMBINED RATINGS	
SENSIBLE HEAT FACTOR/ RANGE	0.67/6.56 - 18.1
CAPACITY RANGE, MBTUH	9.8 - 30.7
LATENT HEATING CAPACITY, MBTUH	3.24 - 11.0
HEATING RATED CAPACITY, MBTUH	-
HEATING RATED CAPACITY AT 17 DEG. MBTUH	-
HEATING RATED CAPACITY AT 5 DEG. MBTUH	-
ENERGY EFFICIENCY RATIO SEER	16
COEFFICIENT OF PERFORMANCE, COP	-
FAN COIL UNIT	
TYPE	HIGHWALL
TOTAL AIR SUPPLY CFM	309 - 848
OUTSIDE AIR, CFM	-
ENTERING AIR CONDITIONS *Fdb/Fwb	80 / 61
EXTERNAL STATIC PRESSURE, "H ₂ O	0.3
FAN MOTOR, HP/FLA	-/0.16
ELECTRICAL SERVICE AVAILABLE	15-1-60
ELECTRIC RESISTANCE HEATER SIZE, KW	-
DIMENSIONS (LxWxH) INCHS.	46x10x14
UNIT WEIGHT, lbs	40
CONDENSING UNIT	
REFRIGERANT	R-410A
REFRIGERANT PIPING LENGTH, ft.	SEE PLANS
LIQUID LINE TYPE, in. O.D.	SEE MANF. RECOMM.
SUCTION LINE SIZE, in. O.D.	SEE MANF. RECOMM.
THERMOSTAT	COOL ONLY
FILTER TYPE (MERV #)	1" THROW AWAY

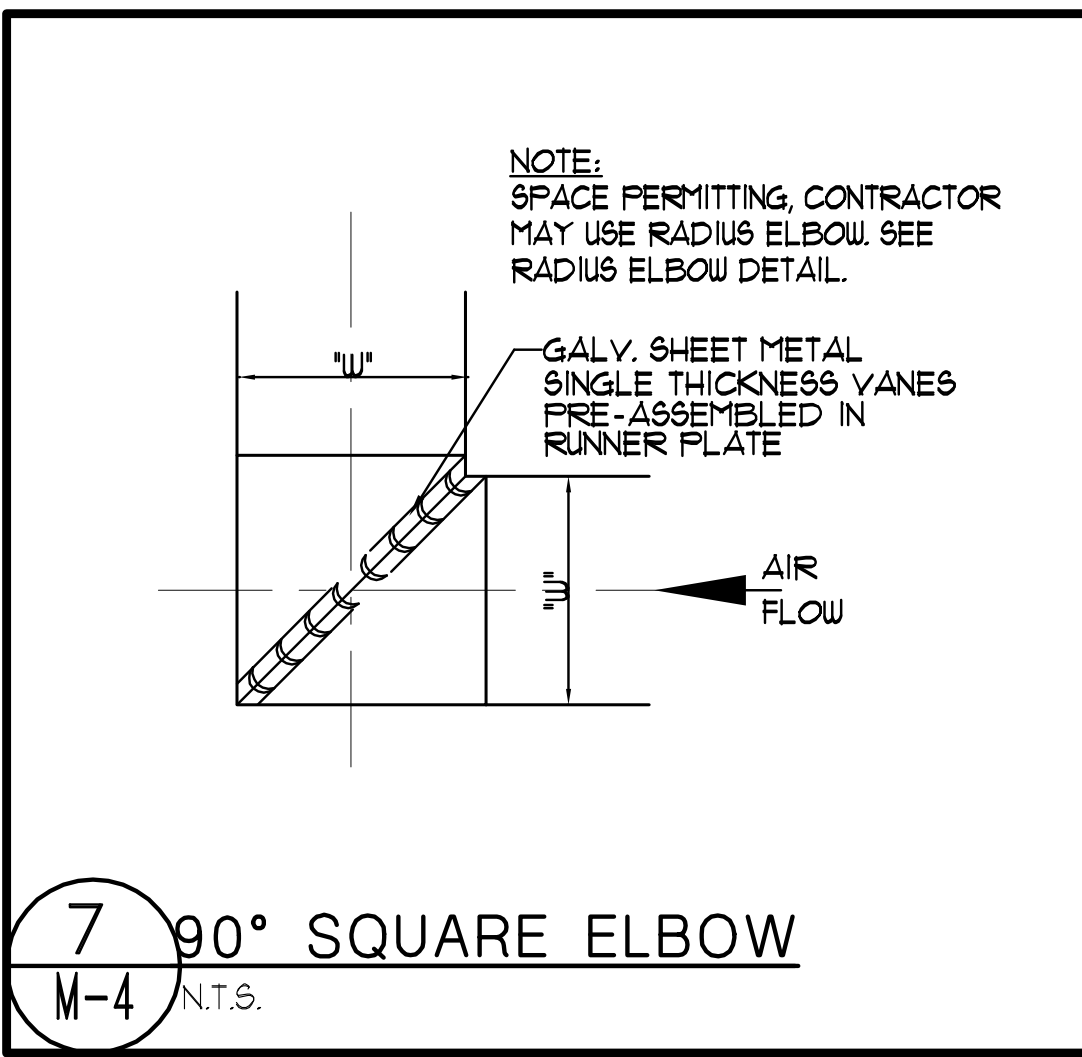
NOTE: PROVIDE A/C LIFT MECHANISM



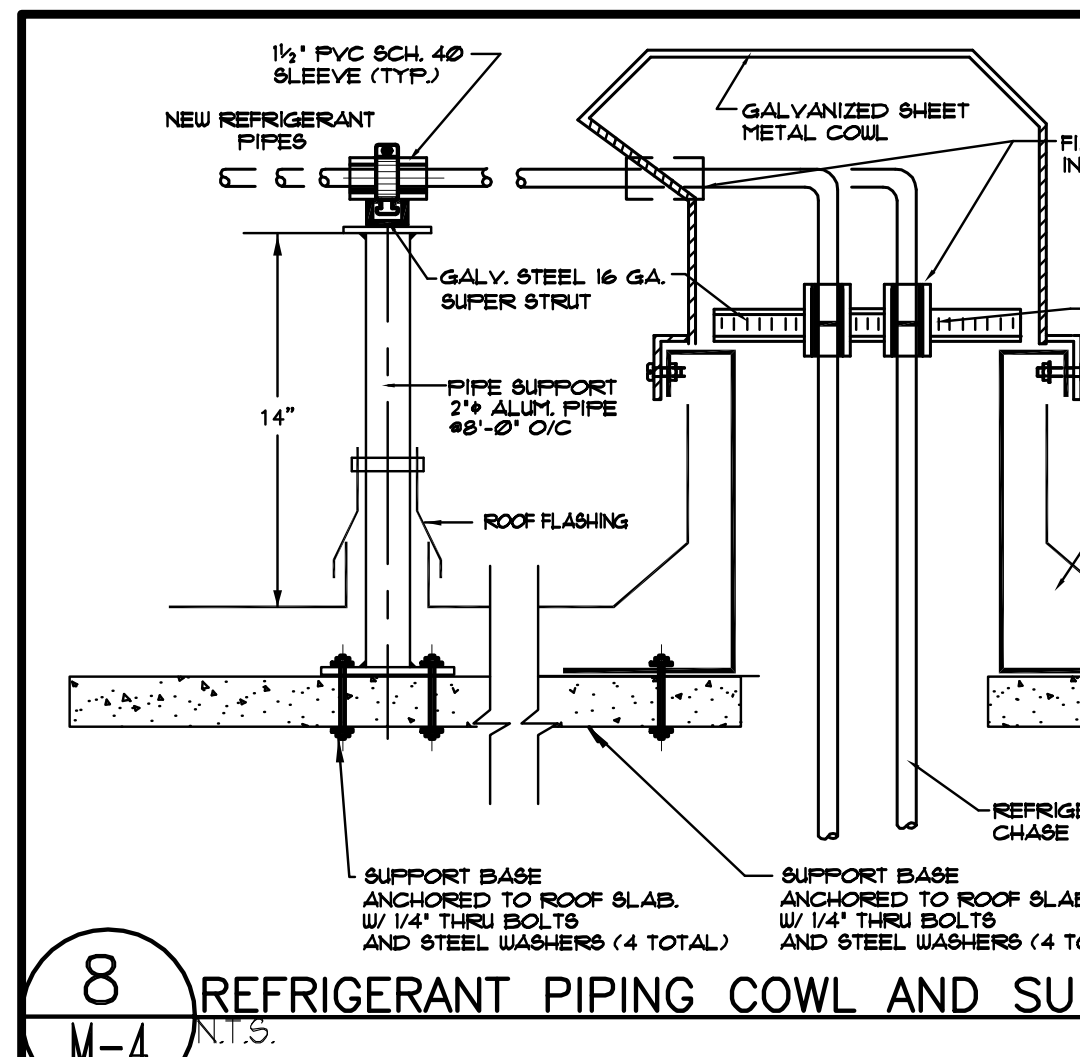
5 DIFFUSER & CONNECTOR DETAIL
M-4 N.T.S.



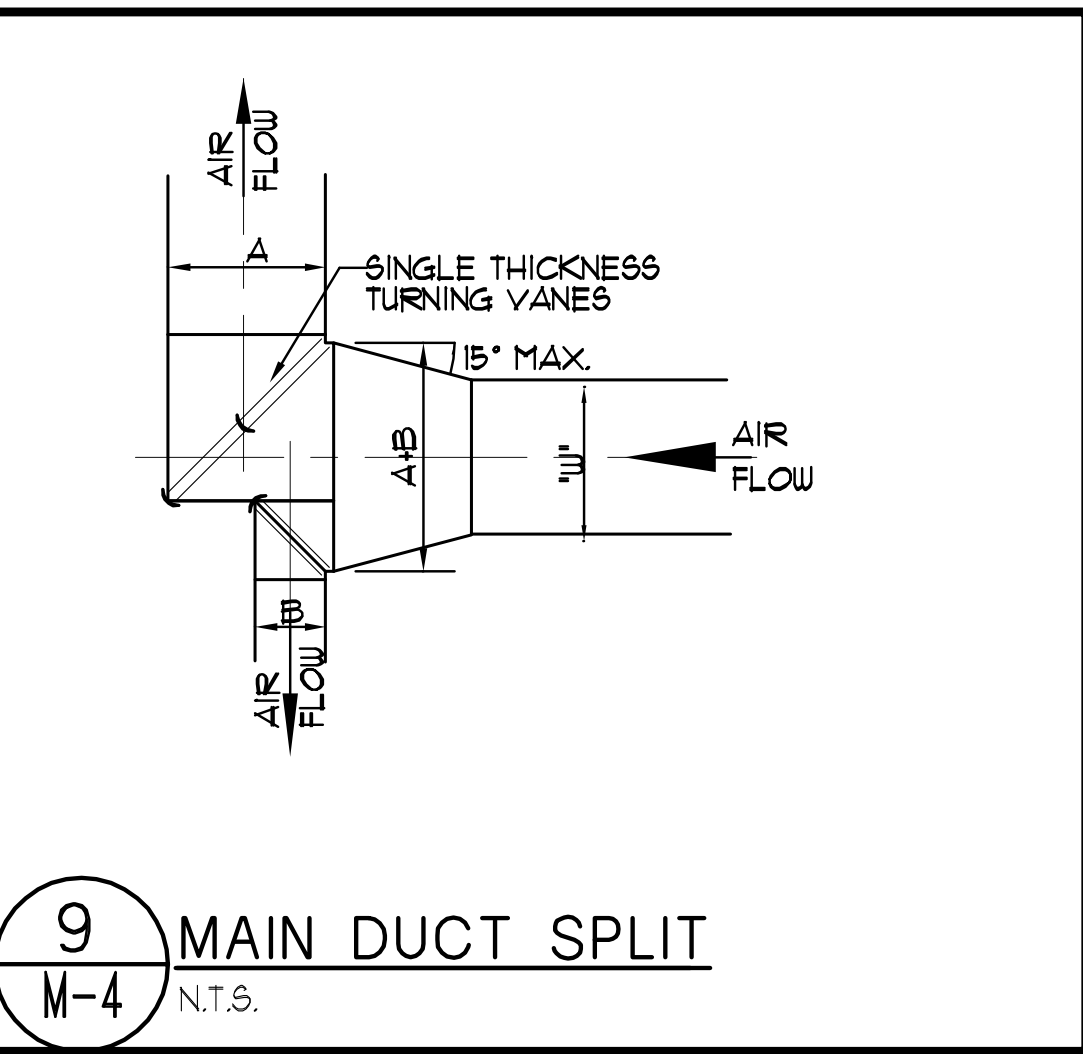
6 DUCT BRANCH TAKE-OFF
M-4 N.T.S.



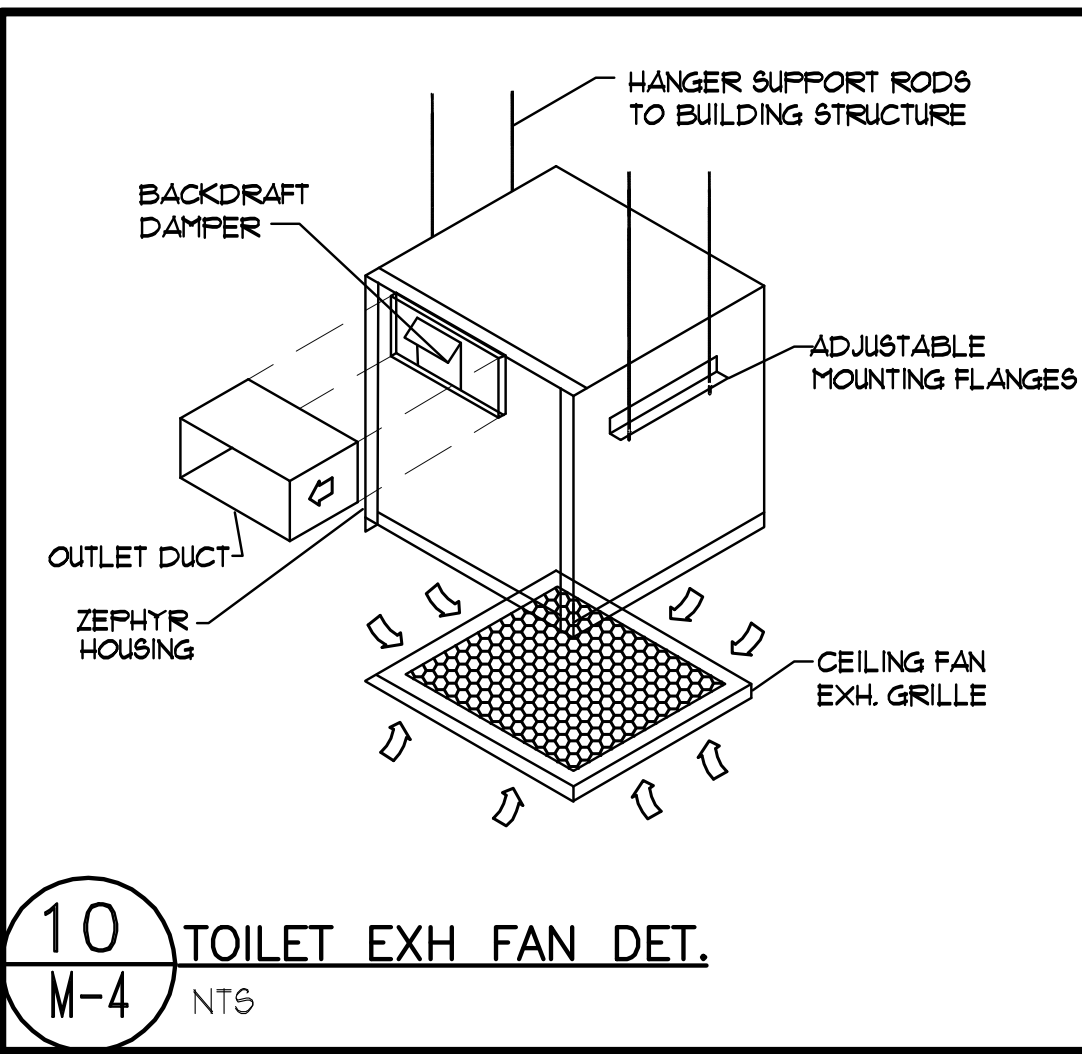
7 90° SQUARE ELBOW
M-4 N.T.S.



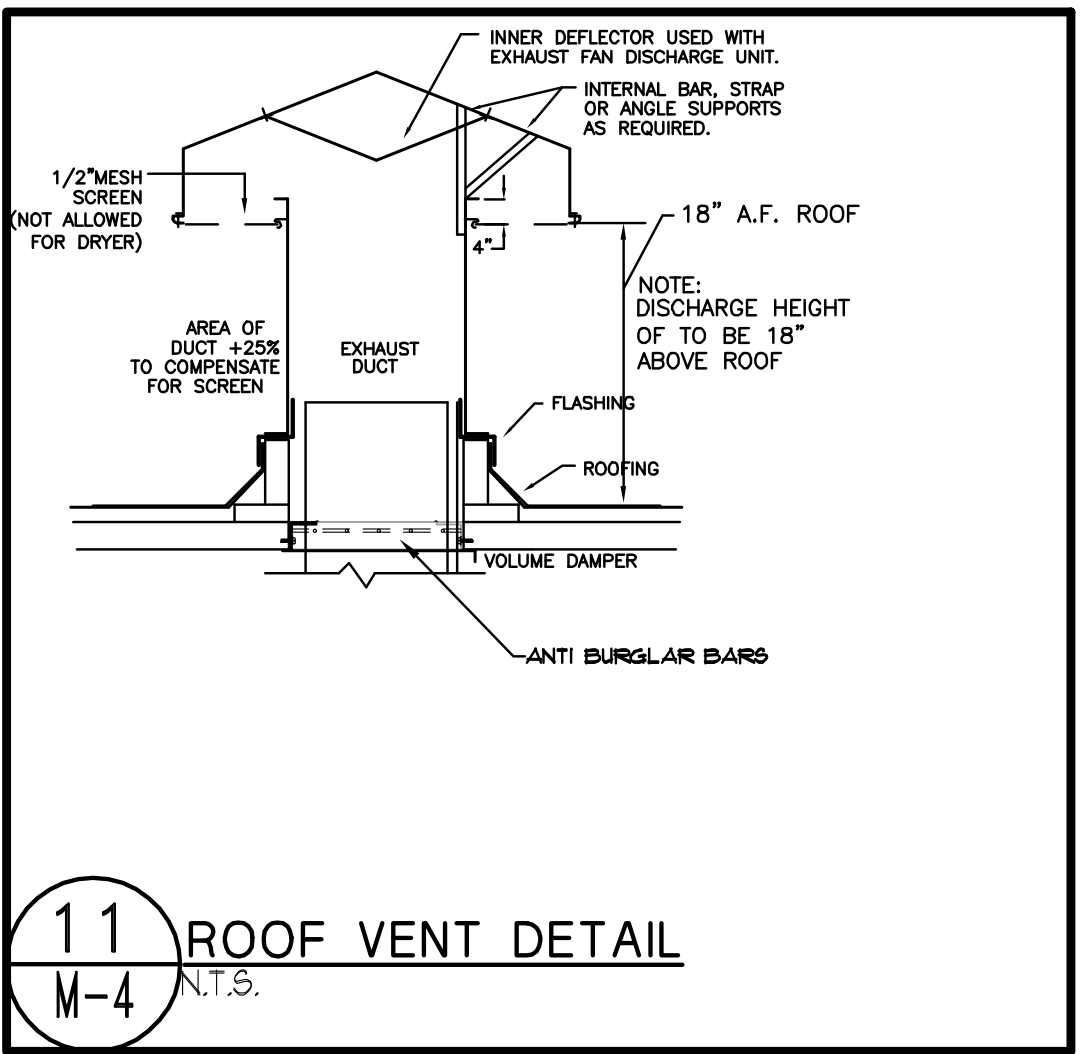
8 REFRIGERANT PIPING COWL AND SUPPORT DETAIL
M-4 N.T.S.



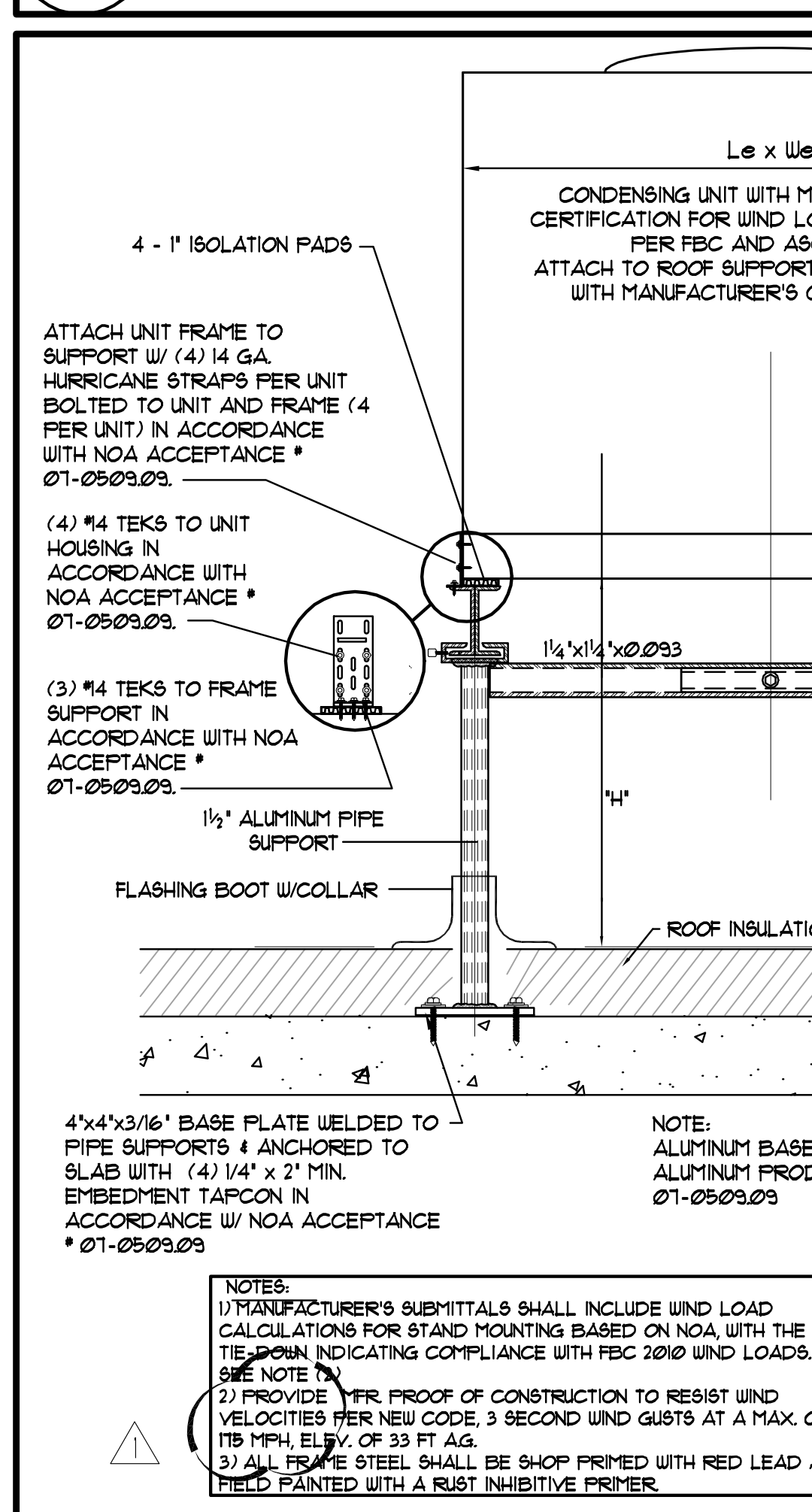
9 MAIN DUCT SPLIT
M-4 N.T.S.



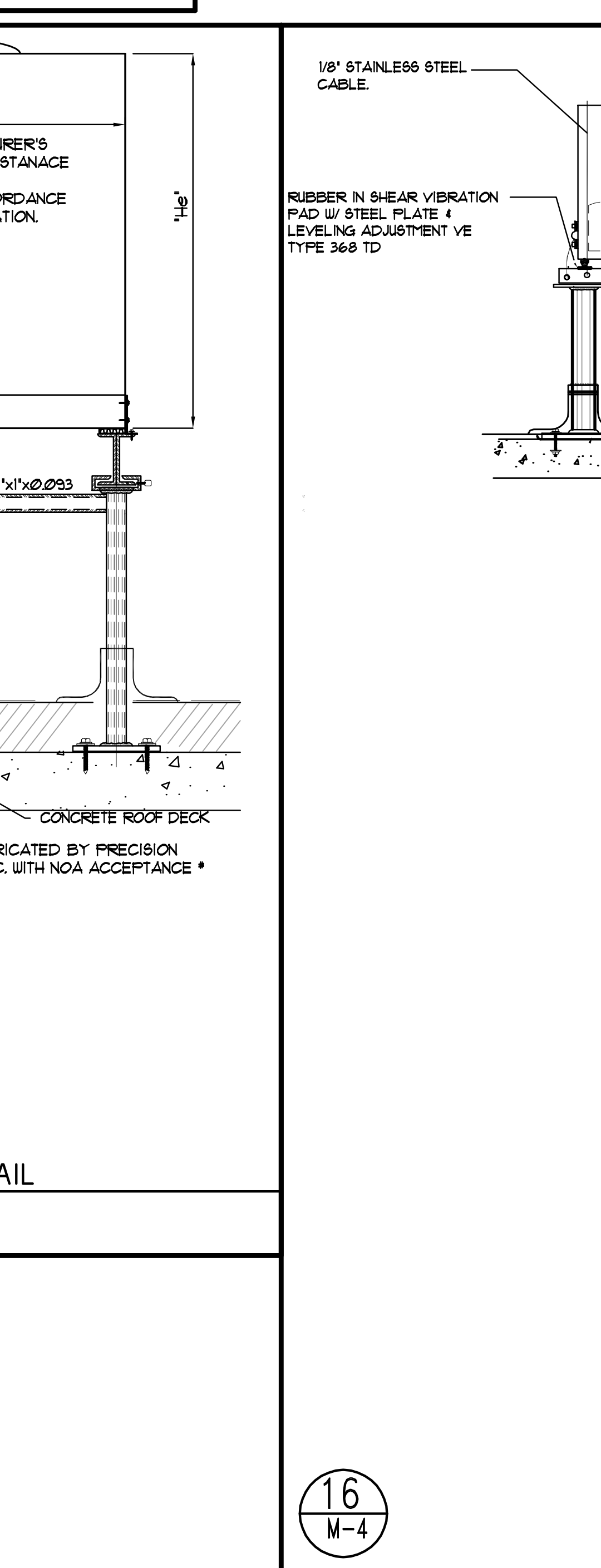
10 TOILET EXH FAN DET.
M-4 N.T.S.



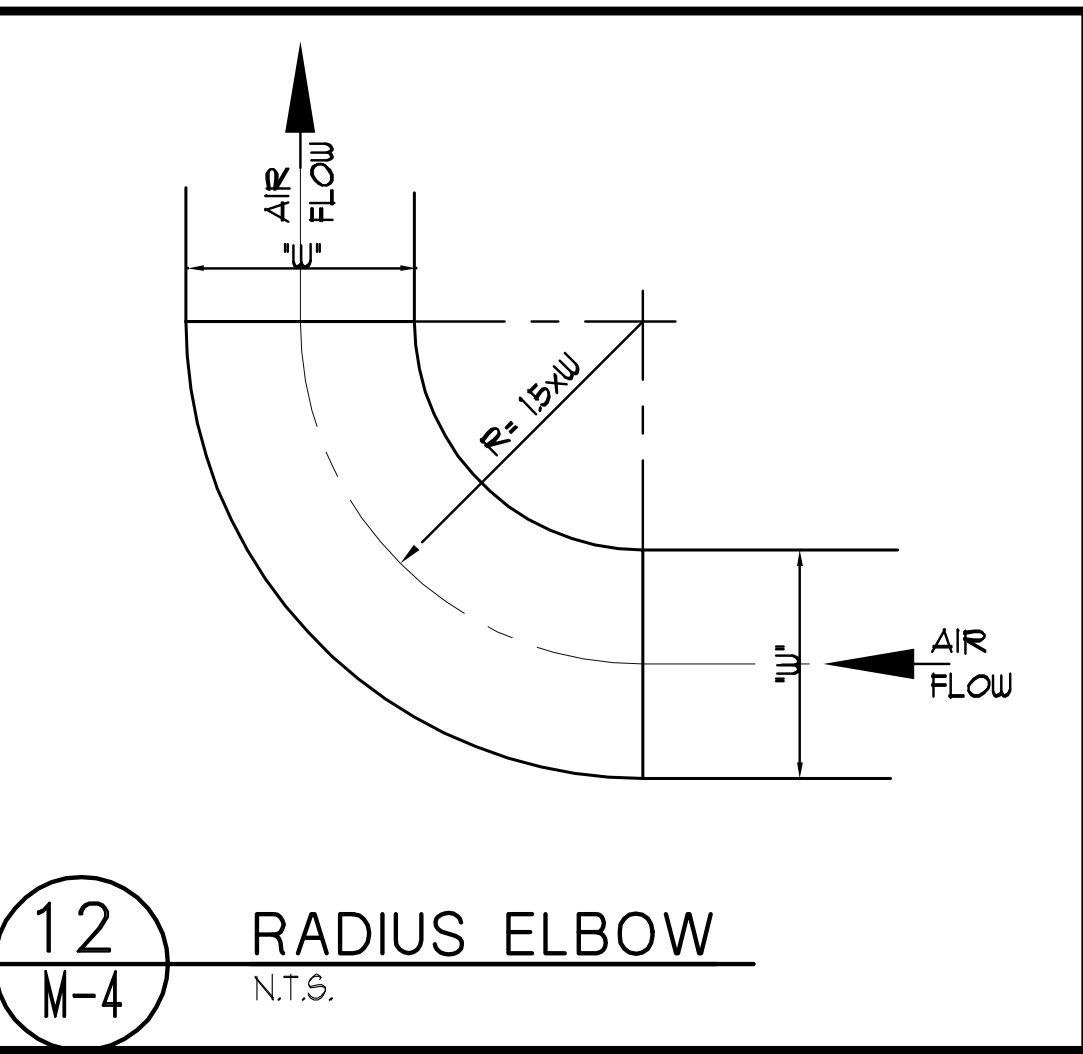
11 ROOF VENT DETAIL
M-4 N.T.S.



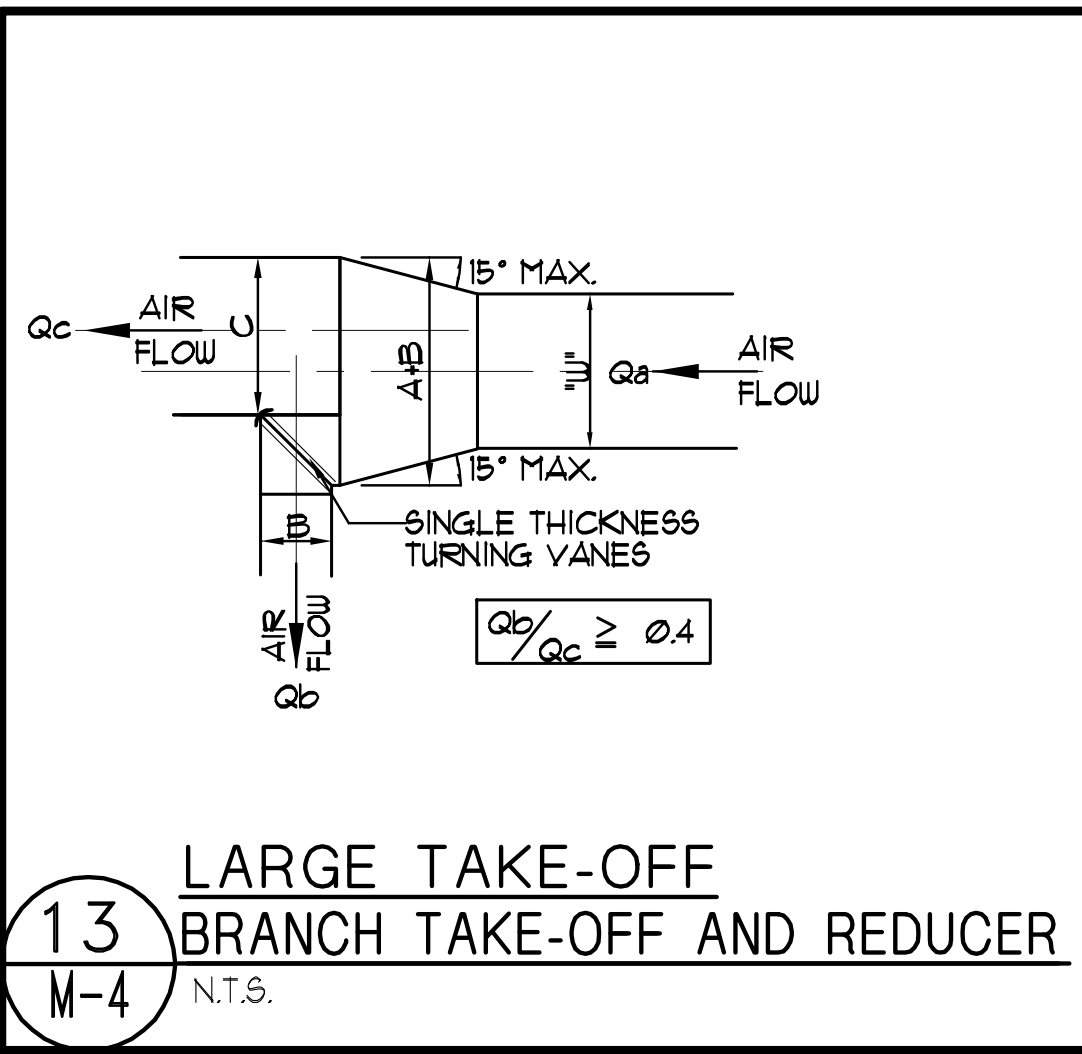
15 CONDENSING UNIT MOUNTING DETAIL
M-4 N.T.S.



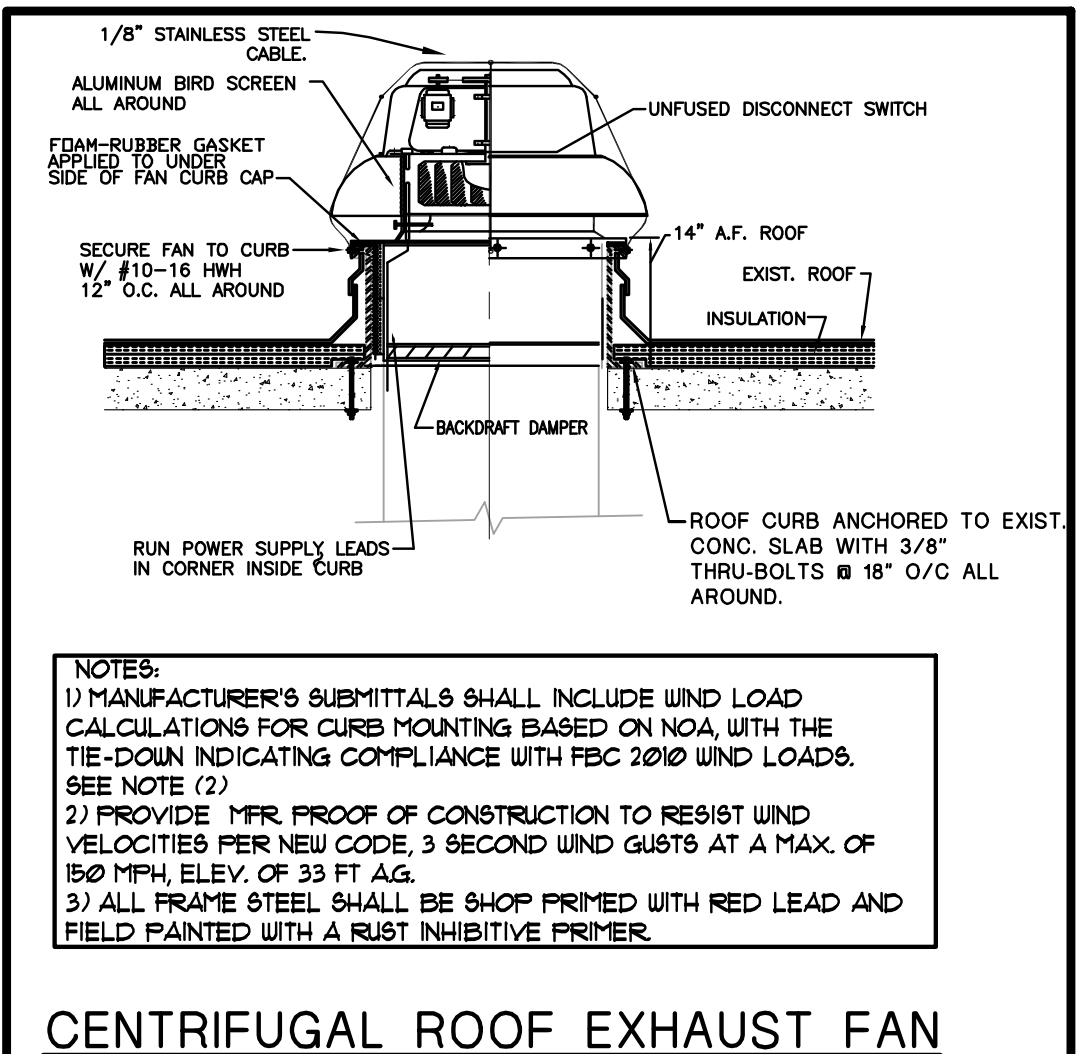
16 DUCTLESS SPLIT UNIT SCHEMATIC
M-4 N.T.S.



12 RADIUS ELBOW
M-4 N.T.S.



13 LARGE TAKE-OFF BRANCH TAKE-OFF AND REDUCER
M-4 N.T.S.



14 CENTRIFUGAL ROOF EXHAUST FAN
M-4 N.T.S.

NOT VALID FOR CONSTRUCTION UNLESS SIGNED & SEALED BY THE PROFESSIONAL ENGINEER OR ARCHITECT. ALL WORK SHALL BE ACCORDING TO THE LATEST EDITIONS OF THE INTERNATIONAL BUILDING CODES AND STANDARDS.

Architecture
Planning &
Urban Design
Space Planning
Interior Design
Corp. Lic. # A-000984

Rodriguez Pereira Architects, Inc.
8000 NW 7th Street, Suite 103 - Miami, FL 33126
Phone: (305) 592-8045 FAX: (305) 592-5156
WWW.RODRIGUEZPEREIRA.COM

INTERIOR ALTERATIONS FOR:
The Town of Medley - Florida
Municipal Services Facility
Owner: The Town of Medley
7777 NW 12th Avenue
Medley, FL 33166 Phone: (305) 887-9541

REVISIONS BY
05-05-14
BD, COORD. RRR

May 20 2014

NOT VALID FOR CONSTRUCTION UNLESS SIGNED & SEALED BY THE PROFESSIONAL ENGINEER OR ARCHITECT. ALL WORK SHALL BE ACCORDING TO THE LATEST EDITIONS OF THE INTERNATIONAL BUILDING CODES AND STANDARDS.

Date
Scale
Drawn
Job
Sheet
Sheet
M-4
Of 4 Sheets

ANTONIO FRANKE
PE #11660 MECH
V.P.#49885 Ve

FRANKE ENGINEERS
Certificate of Authorization # 00000006

1001 NW 27 Street, Miami, FL 33127
Tel: (305) 596-1388 Fax: (305) 596-9078
www.franke-engineers.com
DESIGN: COORDINATOR: V.P.#49885 V.P.#49885
DATE: 04/04/14
JOB NUMBER: 13-222